

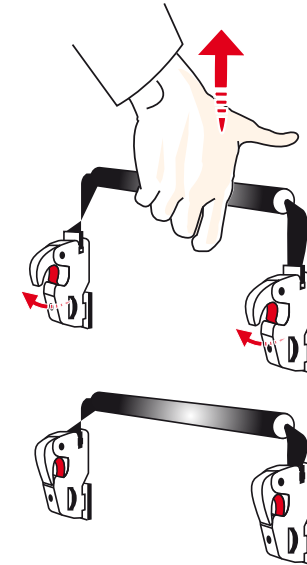
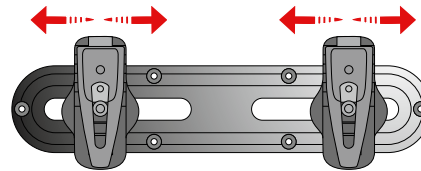
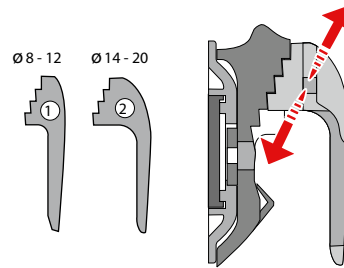
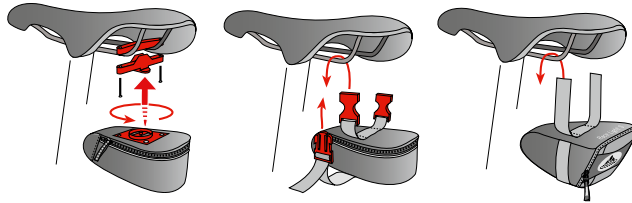
## TWIST ADAPTER

## STICK

## VELCRO-CLOSURE

## STEP ADJUST

## QMR



## TECHNICAL BIKE BAGS

## Attachment Systems

## Fixation Systems

QMR is a top quality, technically advanced attachment system that can be quickly mounted and removed. Built to fit rack struts up to 16 mm, and with optional adaptor pieces can also be used on 8-10 mm struts.

## Stick, Twist Adapter, Klettverschluss/Velcro-closure

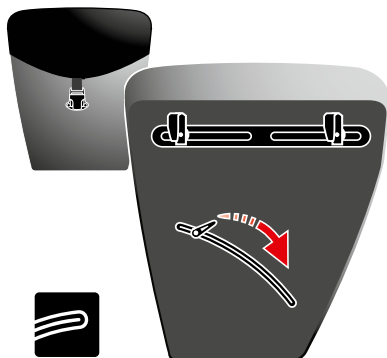
Our Saddlebags are attached with a Twist-Adapter or Stick-Adapter closure and the Ultralight bags with a weight saving Velcro closure. The Twist-Adapter allows the saddlebag to be easily and quickly attached onto a plug-in adapter which is mounted between the saddle struts. Then with a half turn the bag is securely locked into place. The stick closure allows the saddlebag to be attached with one or two straps that wind around the saddle struts and closed with side release buckles.

## Step Adjust

Our Step-Adjust mounting hooks enable you to custom-fit just about any bike rack. They provide a safe and secure attaching system: simply loosen the screw and move the hook up or down along the steps until it fits your rack. A bungee with hook keeps the bag in place. Every bag comes with two sets of Step-Adjust hooks (fits either 8-12mm bike racks, or 14-20mm).

## QMR

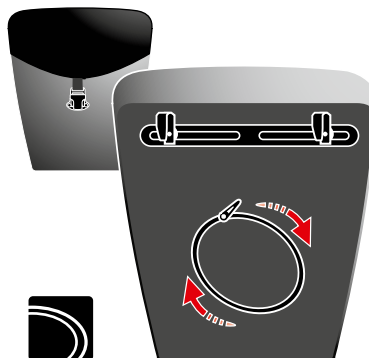
The QMR system makes up the load bearing element for attaching these bags to gear racks. Depending on the bag, they feature the use of various types of back panels. The QMR system makes it possible to easily attach or remove VAUDE bags to your bike. VAUDE uses the well-established click-fix systems for its handlebar bags.

**HARDBACK****Hardback**

The Hardback backplate contributes a high degree of stability to the panniers. They are asymmetrically constructed, light-weight and durable.

**Hard Back Pro**

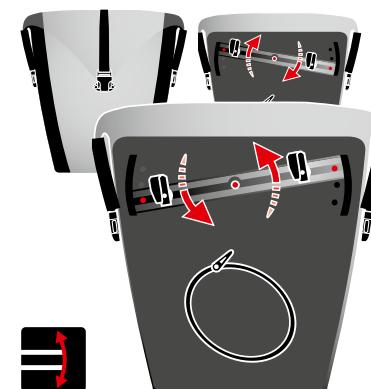
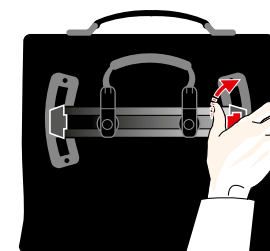
The VAUDE pannier series are equipped with the technically advanced Hard Back Pro made from hardwearing plastic. The back of the bags and the edges are completely covered by this plate. It helps make the bags extremely abrasion and impact resistant, and protects the edges from being beaten down. This also includes the gear rack – cross bars are no longer a problem: the unique lower hook with 360° mobility makes it possible to attach the bags to any gear rack. It also prevents the loaded bags from swinging back and forth on uneven terrain. Bags featuring the Railhook 360° are symmetrical and can be attached to either side of the bike.

**HARDBACK PRO****Plug and Ride**

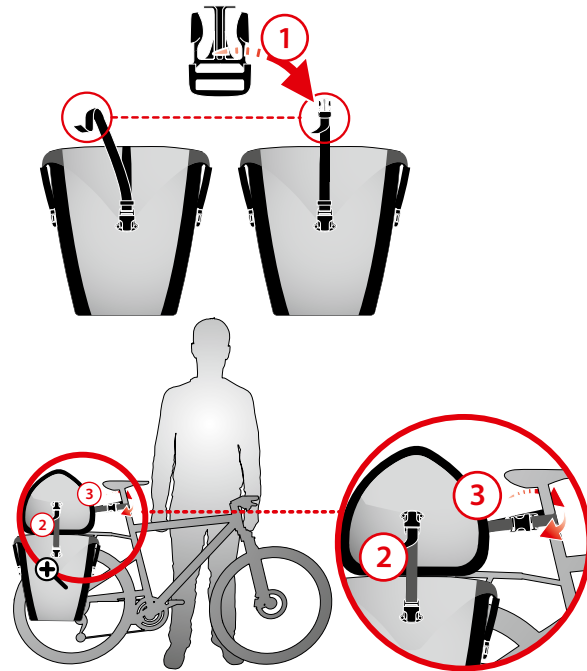
Totally comfortable bag transport: we've developed a sophisticated yet simple adjustable slide rail feature for this bag. When you want to use the bike bag as a shoulder bag, just slip it off the slide-rail with two simple steps.

**Adjustable Rail**

The practical Adjustable Rail function allows you to adjust or pivot the upper rail rack attachment. Attaching the pannier at an angle gives you more freedom of movement and heel clearance for greater pedalling comfort.

**ADJUSTABLE RAIL****PLUG AND RIDE**

## TOP CASE



### Klickfix

The clever KLICKfix system is a quick and safe method to attach your handlebar bag: the bag adapter easily attaches with a “click” into the fixture attached to the handlebars. And at the push of the red button is easily detached..

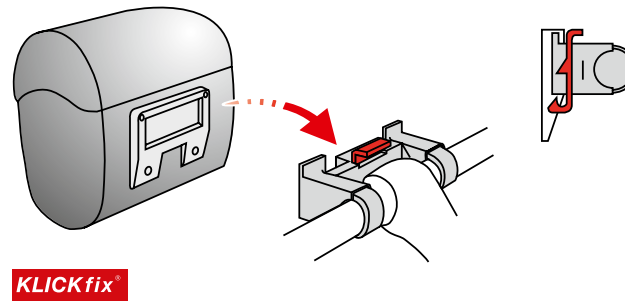
### Top Case

Waterproof top case for Aqua Back, Aqua Back Plus and Aqua Front. Can also be used as a separate travel bag. The Top Case is attached with 2 side clips attach to the Aqua Back and with 1 clip to the seat post to prevent it from slipping or sliding off.

### Features:

- High frequency welded and waterproof
- Removable shoulder strap
- Reflective elements
- Ample storage

## KLICKFIX



## CARE AND GUARANTEE

VAUDE backpacks are made from durable materials. Nevertheless, they should always be dried thoroughly if they get wet. Prolonged dampness can lead to mold and mildew growth.

### Drying

Hang the pack in a well-ventilated place to dry.

### Cleaning

Stains and dirt are best removed with a damp sponge. If the pack gets really dirty, it can be washed in the shower or a bathtub. Please take care that metal parts are removed if possible, as they could create rust stains. Never wash a pack in the washing machine or dry clean!

The original owner of a VAUDE backpack is granted a three-year warranty against material and manufacturing flaws. As a matter of principle, all damaged gear can be sent to us for repair for a fee.

Whether it's a zipper that needs to be replaced or a hole that needs to be darned – our repair professionals can repair (almost) anything.

Smaller repairs can be done at home or at your local VAUDE dealer:

### Difficult Zips

Difficult zips are best sprayed with a silicone spray (from your local hardware store, for example). Simply spray the zip and it will run easily again.

### Damaged Buckles

In some backpacks, defective buckles can be easily replaced at home. Just unthread the damaged buckle and thread the new one in. Unfortunately, most buckles can't be replaced like this, since they're sewn onto the backpack. In this case you have to send the pack into our repair department. Our experts will replace the buckle and sew it up again professionally.